

Allow a User without *ALLOBJ Special Authority to View a User's Active Job Log That Does Have *ALLOBJ Special Authority - A Technical Tip

submitted by [Kevin McEvoy, Estee lauder](#).

This tip will allow a User without *ALLOBJ Special Authority to View a User's Active Job Log That Does Have *ALLOBJ Special Authority. It was suggested by IBM's Support Line.

A user without *ALLOBJ special authority can view a joblog for a user with *ALLOBJ special authority is possible starting with Version 5 of OS/400 (i5/OS). To allow a user without *ALLOBJ special authority to view a user's active job log that has *ALLOBJ special authority, do the following:

Use one of the following options.

Option 1: Starting with V5R3, activate the function with the following command:

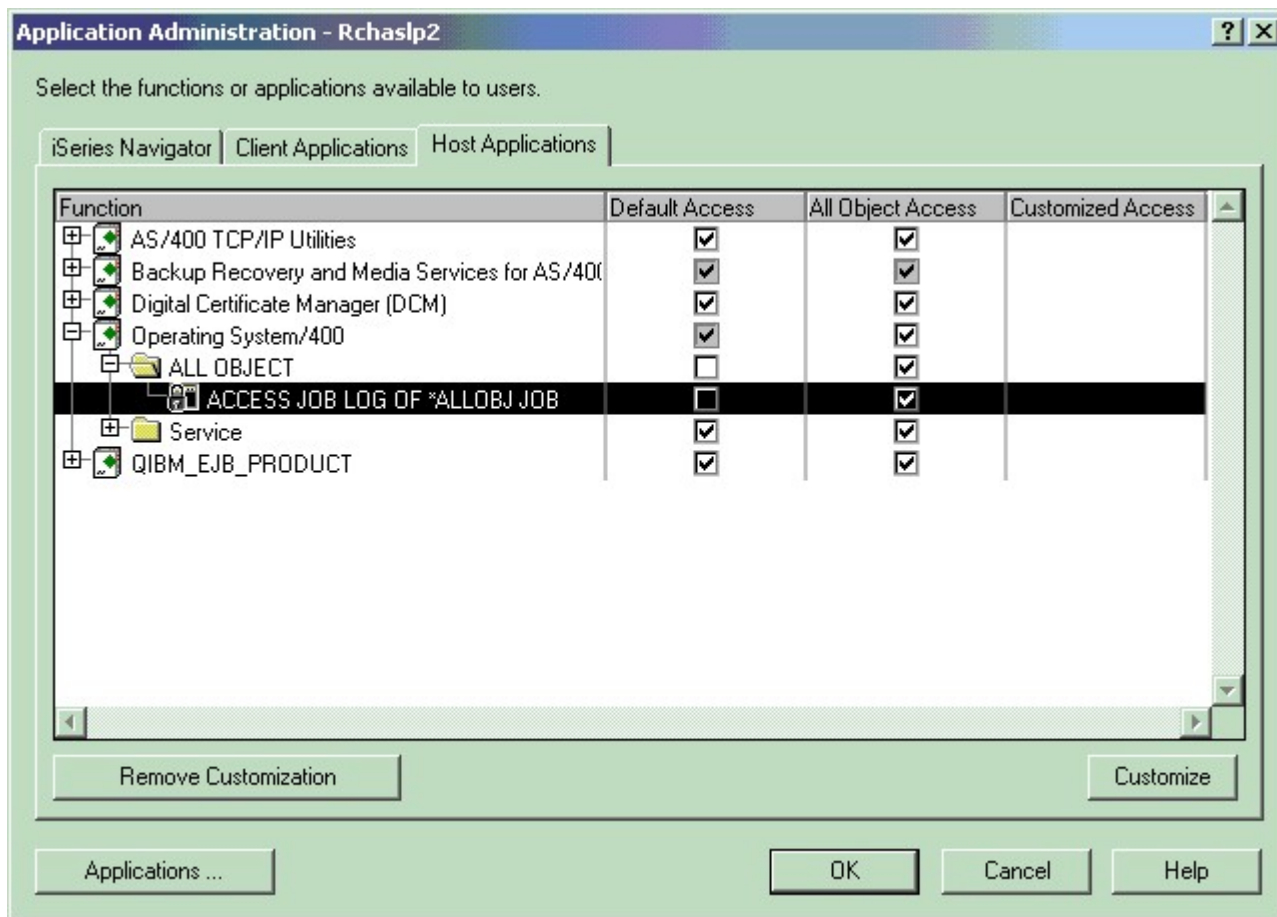
```
CHGFCNUSG FCNID(QIBM_ACCESS_ALLOBJ_JOBLOG) USER(USRNAME) USAGE(*ALLOWED)
```

Note: SECADM is required to issue the command successfully.

1. The following PTFs are required to enable this function at these releases:
 - o V5R1: SI08171 on cumulative tape 3343510
 - o V5R2: SI08172 on cumulative tape 3364520
2. The users using this feature must have *JOBCTL special authority.

Option 2: From the iSeries Navigator, do the following:

1. Open iSeries Navigator.
2. Right-click on the system and choose Application Administration (for V5R2 choose Local settings).
3. This brings up the Application Administration window below. (It may require an update to iSeries Navigator functions before this window comes up.)
4. Click on the Host Applications tab.
5. Expand the Operating System/400 Function.
6. Expand the new All Object folder.
7. Choose the Default access (all users).
8. If the ACCESS JOB LOG OF *ALLOBJ JOB function is highlighted, the Customize button on the lower right of this window can be used to customize this function for specific users.
9. Once the Default Access is checked for the ACCESS JOB LOG OF *ALLOBJ JOB or individual users added with the customize button, *ALLOBJ special authority is no longer required to view another user's active job log if they have *ALLOBJ special authority.
10. It looks like:



There are many other things that can be changed with this same **CHGFCNUSG** command (or iSeries Navigator). The list, at V5R3 from either the **DSPFCNUSG** or **WRKFCNUSG** command is:

Function ID	Function Name
QIBM_DIRSRV_ADMIN	IBM Directory Server Administrator
QIBM_ACCESS_ALLOBJ_JOBLOG	Access job log of *ALLOBJ job
QIBM_ALLOBJ_TRACE_ANY_USER	Trace any user
QIBM_QCST_SERVICE_CLUSTADMIN	Cluster Administration
QIBM_QCST_SERVICE_CLUSTOPER	Cluster Operation
QIBM_QYAS_SERVICE_DISKMGMT	Disk units
QIBM_SERVICE_DUMP	Service dump
QIBM_SERVICE_JOB_WATCHER	JOB WATCHER
QIBM_SERVICE_THREAD	Thread control
QIBM_SERVICE_TRACE	Service trace
QIBM_QINAV_WEB_FUNCTIONS	Manage Server Through Web Interface
QIBM_QINAV_WEB_INTERFACE	Use of iSeries Navigator Web Interface
QIBM_QSY_SYSTEM_CERT_STORE	*SYSTEM certificate store
QIBM_QTMF_CLIENT_REQ_0	Initiate Session
QIBM_QTMF_CLIENT_REQ_3	Change Directory
QIBM_QTMF_CLIENT_REQ_6	Send Files
QIBM_QTMF_CLIENT_REQ_7	Receive Files
QIBM_QTMF_CLIENT_REQ_9	CL Commands
QIBM_QTMF_SERVER_REQ_0	Logon Server
QIBM_QTMF_SERVER_REQ_1	Create Directory/Library
QIBM_QTMF_SERVER_REQ_2	Delete Directory/Library
QIBM_QTMF_SERVER_REQ_3	Change Directory
QIBM_QTMF_SERVER_REQ_4	List Files
QIBM_QTMF_SERVER_REQ_5	Delete Files
QIBM_QTMF_SERVER_REQ_6	Send Files
QIBM_QTMF_SERVER_REQ_7	Receive Files
QIBM_QTMF_SERVER_REQ_8	Rename Files

QIBM_QTMF_SERVER_REQ_9	CL Commands
QIBM_QYCM_CIMOM_CREATE_CLASS	Create Class
QIBM_QYCM_CIMOM_DELETE_CLASS	Delete Class
QIBM_QYCM_CIMOM_ENUM_CLASS	Enumerate Classes
QIBM_QYCM_CIMOM_ENUM_CLASS_NAM	Enumerate Class Names
QIBM_QYCM_CIMOM_GET_CLASS	Get Class
QIBM_QYCM_CIMOM_MODIFY_CLASS	Modify Class
QIBM_QYCM_CIMOM_DELETE_QUAL	Delete Qualifier
QIBM_QYCM_CIMOM_ENUM_QUAL	Enumerate Qualifiers
QIBM_QYCM_CIMOM_GET_QUAL	Get Qualifier
QIBM_QYCM_CIMOM_SET_QUAL	Set Qualifier
QIBM_QYPS_MGTCTRL_SUPER_USER	Management Central Administration Access
QIBM_XD1_OPNAV_APPDEV	Application Development
QIBM_XD1_OPNAV_BACKUP	Backup
QIBM_XD1_OPNAV_MULTIMEDIA	Multimedia (Pre-V5R1M0 clients only)
QIBM_XD1_OPNAV_USRGRP	Users and Groups
QIBM_XE1_OPNAV_AFPMGR	AFP Manager
QIBM_XE1_OPNAV_APPADMIN	Application Administration
QIBM_XD1_OPNAV_JOBGMGT	Jobs
QIBM_XD1_OPNAV_MESSAGES	Messages
QIBM_XD1_OPNAV_PRINTERS	Printers
QIBM_XD1_OPNAV_PRINTOUT	Printer Output
QIBM_XD1_OPNAV_DBLIBS	Schemas
QIBM_XD1_OPNAV_DBODBC	ODBC Data Sources (Pre-V5R1M0 clients only)
QIBM_XE1_OPNAV_DBNV	Database Navigator Maps
QIBM_XE1_OPNAV_DBSQLPM	SQL Performance Monitors
QIBM_XE1_OPNAV_DBXACT	Transactions
QIBM_XE1_OPNAV_FSNETSrv	File Shares
QIBM_XD1_OPNAV_INTERNET	Internet
QIBM_XD1_OPNAV_IPSECURITY	IP Policies
QIBM_XD1_OPNAV_NETSTAT	IBM Network Stations (Pre-V5R3M0 clients only)
QIBM_XD1_OPNAV_PROTOCOL	TCP/IP Configuration
QIBM_XD1_OPNAV_PTTOPT	Remote Access Services
QIBM_XD1_OPNAV_SERVERS	Servers
QIBM_XE1_OPNAV_EIM	Enterprise Identity Mapping
QIBM_XE1_OPNAV_WINADM	Windows Administration
QIBM_XD1_OPNAV_AUTHLIST	Authorization Lists
QIBM_XD1_OPNAV_SECPOLICY	Policies
QIBM_XE1_OPNAV_NETAS	Network Authentication Service
QIBM_XD1_OPNAV_HARDINV	Hardware
QIBM_XD1_OPNAV_SOFTINV	Software
QIBM_XE1_OPNAV_SYSVAL	System Values and Time Management
QIBM_XD1_OPNAV_FSQDLS	QDLS
QIBM_XD1_OPNAV_FSQFILESVR	QFileSvr.400
QIBM_XD1_OPNAV_FSQLANSRV	QLANSrv
QIBM_XD1_OPNAV_FSQNETWARE	QNetWare
QIBM_XD1_OPNAV_FSQNTC	QNTC
QIBM_XD1_OPNAV_FSQOPENSYS	QOpenSys
QIBM_XD1_OPNAV_FSQOPT	QOPT
QIBM_XD1_OPNAV_FSQSYSLIB	QSYS.LIB
QIBM_XD1_OPNAV_FSROOT	Root
QIBM_XE1_OPNAV_ACTJOB	Active Jobs
QIBM_XE1_OPNAV_JOBQUE	Job Queues
QIBM_XE1_OPNAV_MEMPOOL	Memory Pools
QIBM_XE1_OPNAV_OUTQUES	Output Queues
QIBM_XE1_OPNAV_SRVJOB	Server Jobs
QIBM_XE1_OPNAV_SUBSYS	Subsystems
QIBM_XE1_DOT_NET	.NET Data Provider
QIBM_XE1_ODBC	ODBC Support
QIBM_XE1_OLEDB	OLE DB Provider
QIBM_XE1_RMTCMD	Remote Command - Command Line
QIBM_XE1_5250	5250 Display and Printer Emulator
QIBM_XE1_DDWNLD_AO	ActiveX Automation Downloads

QIBM_XE1_DDNLD_AUTO	Autostart Downloads
QIBM_XE1_DDNLD_EXCEL	Excel Add-in Downloads
QIBM_XE1_DDNLD_GUI	GUI Downloads
QIBM_XE1_DDNLD_RTOPCB	Use of RTOPCB
QIBM_XE1_DUPLD_AO	ActiveX Automation Uploads
QIBM_XE1_DUPLD_APPREP	Appending or Replacing Host Files
QIBM_XE1_DUPLD_AUTO	Autostart Uploads
QIBM_XE1_DUPLD_EXCEL	Excel Add-in Uploads
QIBM_XE1_DUPLD_GUI	GUI Uploads
QIBM_XE1_DUPLD_RFROMPCB	Use of RFROMPCB
QIBM_XE1_DUPLD_CRTF_BASED	File Creation Based on Existing Server Files
QIBM_XE1_DUPLD_WIZ_CRTF	File Creation Based on PC File or Excel Spreadsheet